



Building Trust and Ensuring Accountability

ITE-ASHE Winter Workshop

Meg Pirkle, P.E., GDOT Chief Engineer | March 4, 2019

Let's Step Back a Decade... Headlines from 2008-2009

“Scandals and Shake-Up
in a Georgia Department”

*“Trash Talk from Ex-GDOT chair:
Audit Findings Absurd”*

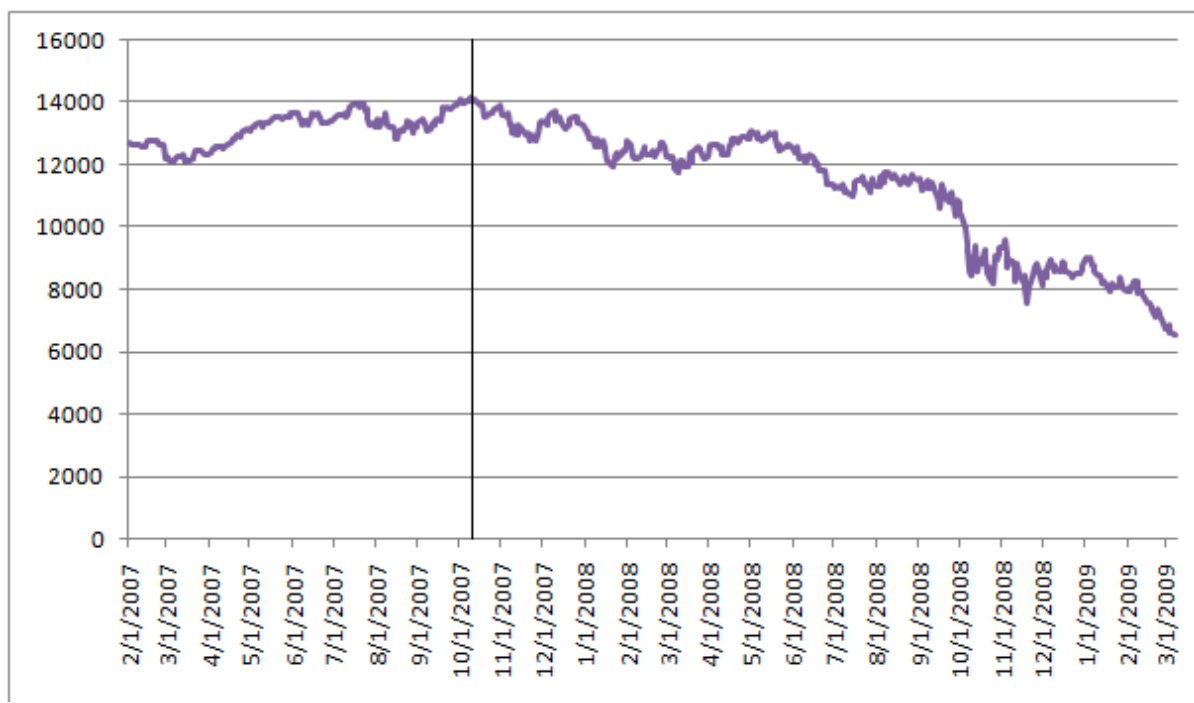
“GBI arrests GDOT
employee in credit
card theft ring”

“Broken Promises from Georgia DOT?”

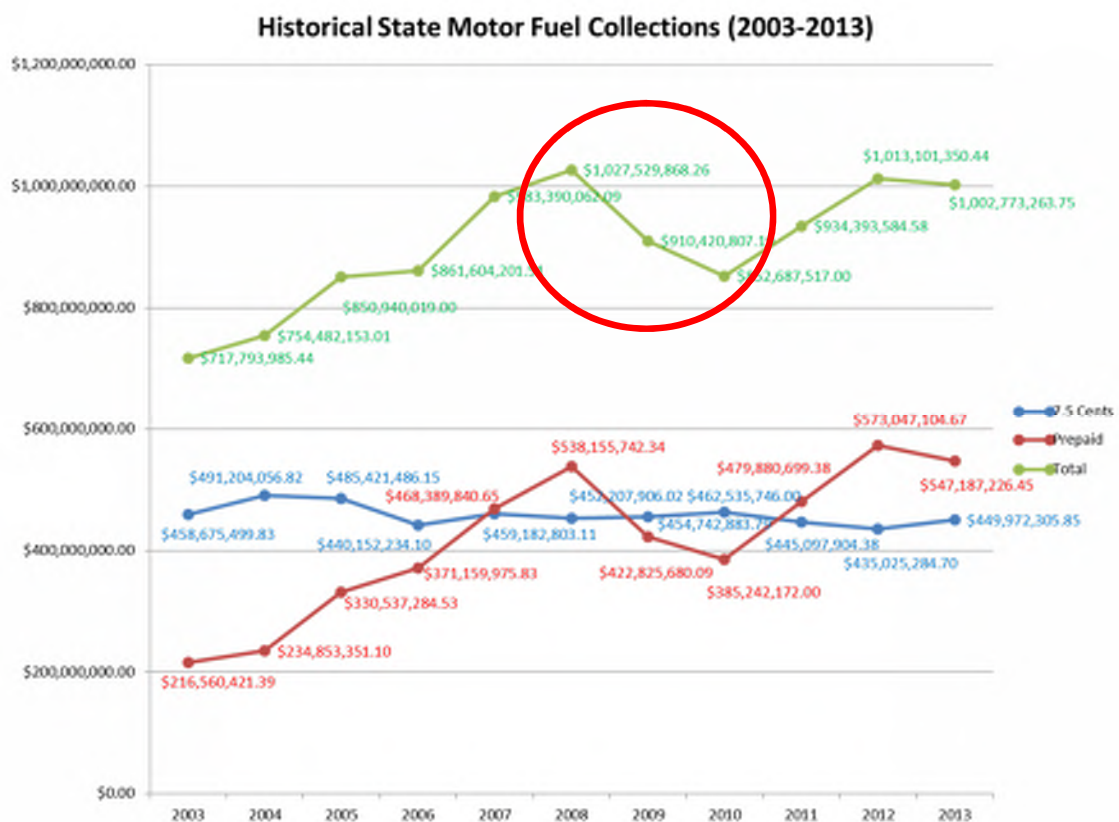
**“Road Projects affected by state
transportation funding shortfall”**

“Best day at GDOT
was day I was fired”

Something else was happening in 2008-2009...



Impact to GDOT at the Time: Project Delays...Financial Uncertainty...Reduced Headcount...



Transportation Investment Act

- 12 regions
- Referendum in each
- 1% sales tax
- 10 years
- Projected annual statewide revenue of \$1.55B at time



The Results: 3 regions passed, 9 regions failed

**“Distrustful of government and
riven by difference, metro Atlanta
voters reject transportation plan”**

*“I just don’t trust that
government is going to take
the money and do what they
say they are going to do”*

“We the people, you have to
earn our trust before asking
for more money”

TSPLOST 2012



**Traffic in metro Atlanta is
tied up in knots**



**But now we have a chance
to untie that knot**

Turning the Tide



2015 Legislative Success

Transportation
Funding Act of 2015

Garoads.org



Georgia® **Your
Dollar\$
Building
A Better
Georgia**

Performance Management Reporting

GDOT
Georgia Department of Transportation

MILEPOSTS

FY 2019 PERFORMANCE MEASURES

— FIRST QUARTER —

SETTING GOALS

At Georgia DOT, we align and measure our performance with our goals and objectives. Each goal relates to and supports the state's strategic priorities.

DATA DRIVES PERFORMANCE

Performance management enables us to accomplish our mission of providing a safe and well-maintained transportation system for the people of Georgia. Harnessing and measuring data enables Georgia DOT to make decisions, adjustments and improvements that lead to fulfilling this mission.

PERFORMANCE MEASURES

Georgia DOT's many performance measures - known as MilePosts - understand how we are doing and where we need to improve. They range from hundreds of key measures from average highway speeds to pavement conditions, the condition of our bridges to average Highway Emergency Response Operator (HERO) response time, the number of fatal roads to percentage of projects completed on time and on budget.

MISSION AND GOALS

Our mission is to deliver a transportation system that is safe, reliable and mobility. The...

TOWARD ACHIEVING RESULTS

FY 2019 Performance Measures

SAFETY

Invest in safety for Georgians and Georgia DOT employees.
Tracks fatalities on Georgia's roads.

NUMBER OF ROADWAY FATALITIES STATEWIDE (QUARTERLY)

TARGET	CYTD	Q1 JAN-MAR	Q2 APR-JUN	Q3 JUL-SEP	Q4 OCT-DEC
Reduction of 41 per calendar year as compared to the previous calendar year	2018 YTD	339	718	1100	1484
	2017 YTD	378	763	1173	1549
	DIFFERENCE (YTD)	-39	-45	-73	-65

■ Increase in Fatalities ■ Decrease in Fatalities ■ No Change

CYTD means "calendar year to date." This is a rolling, cumulative sum. Thus, the fatality number displayed for Q2 includes the number of fatalities that occurred in Q1 and the number of fatalities that occurred in Q2, and so on. Data valid as of 1/15/19.

NUMBER OF WORK ZONE FATALITIES

Work zone fatalities include the traveling public and GDOT workers, and are included in total number of statewide fatalities.

TARGET	CALENDAR YEAR	Q1 JAN-MAR	Q2 APR-JUN	Q3 JUL-SEP	Q4 OCT-DEC	TOTAL
0	2018	3	5	4	Data Pending	

NOTE: Work Zone Fatalities are standalone numbers, not cumulative. Data valid as of 11/29/18 pending processing of fatality reports.

CALENDAR YEAR FATALITY TREND ON GEORGIA'S ROADWAYS

Data as of 1/15/19

INVEST IN SAFETY FOR GEORGIANS & GDOT EMPLOYEES

1549
(Year 2017)
Actual Fatalities on Georgia's Roadways

Automobile
11
Minutes
Average HERO Response Time

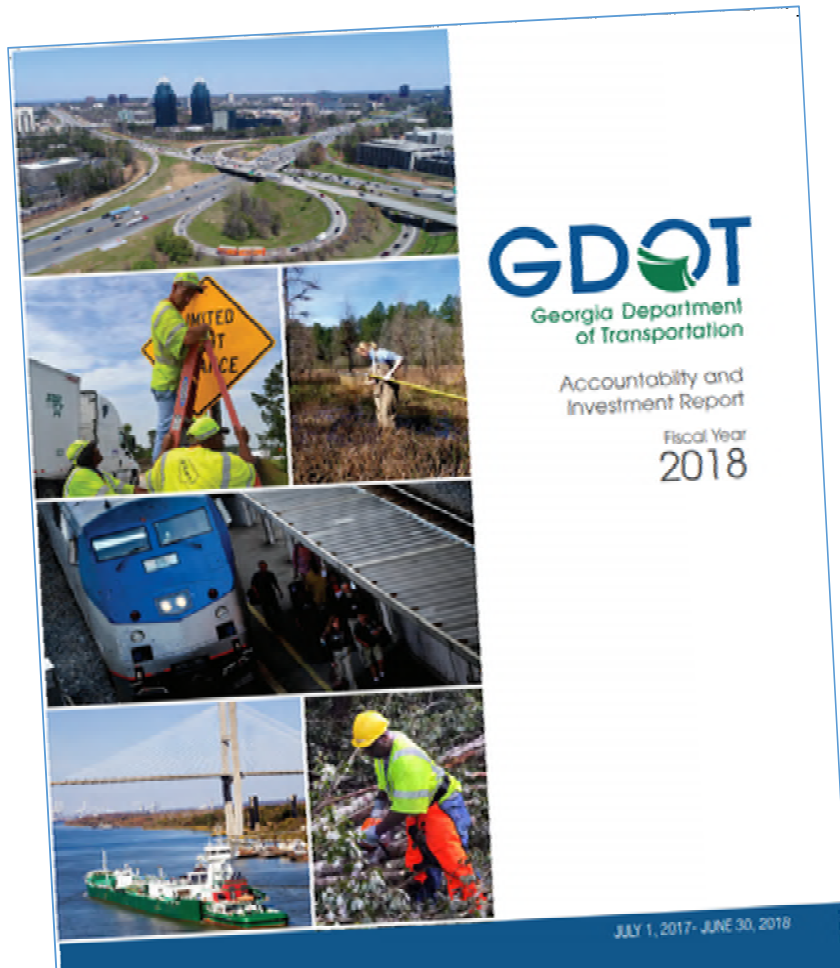
EFFICIENTLY TAKE CARE OF WHAT WE HAVE

87%
% of State-Owned Bridges Meeting GDOT Standards

71%
% of Non-Interstate Roads Meeting GDOT Maintenance Standards

74%
% of Interstate Roads Meeting GDOT Maintenance Standards

Accountability & Investment



FUNDING SOURCES

STATE

-  **Fuel**
\$0.26 | GALLON GASOLINE
\$0.30 | GALLON DIESEL
 -  **Hotel**
\$5 PER NIGHT
 -  **Annual Alternative Fuel Vehicle Fee**
\$298.13 NON-COMMERCIAL
\$113.95 COMMERCIAL
 -  **Annual Heavy Vehicle**
\$50 TO \$100
 -  **Bridge Bond Funds**
\$100 MILLION
 -  **Agency and Other Fees**
- \$2,131,821,390**

FEDERAL

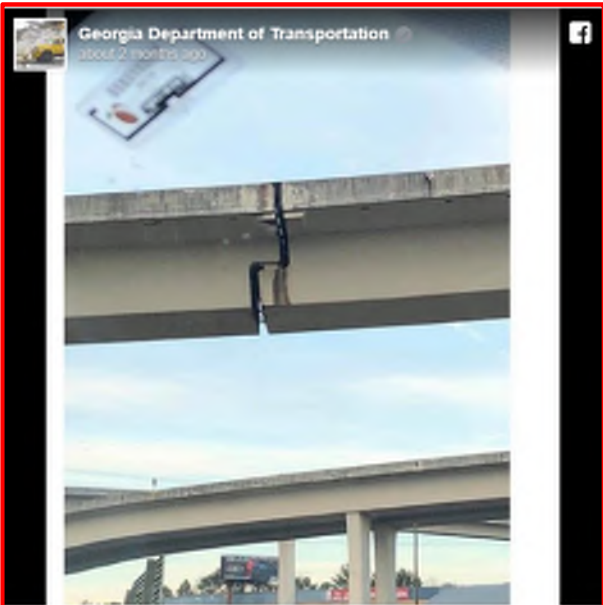
-  **U.S. Department of Transportation
FEDERAL HIGHWAY
ADMINISTRATION**
 -  **Federal Aviation
Administration**
 -  **Federal Transit
Administration**
- \$1,593,146,310**

TOTAL - \$3,724,967,700

Traditional Media: Strategic Pitches & Partnerships



Crisis Management and Online Engagement



We're sure you've seen this photo of a portion of spaghetti junction that has caused a lot of concern. The photo depicts a post tensioned segmental box beam bridge. Each span (left and right side of joint) is cantilevered and the two spans sit on the small horizontal area between them. This is where the bridge expands and contracts. Expansion joints are a commonly used design element in all areas of construction worldwide. It allows for elements of a building or bridge, in this case, to safely expand and contract as needed during temperature changes. The bridge is fine and actually is designed as appears. Thanks to all who have contacted us. Have a happy & safe New Year!

414 336 771



Scott Markle This is seriously amazing. Nice job Georgia Department of Transportation social team!
 Like · Reply · 5

1 Reply

Samantha Lynn Mentzer Georgia Department of Public Safety your GIF use is impressive, I wish Pennsylvania Department of Transportation (PennDOT) was on your level.
 Like · Reply · 21

8 Replies



RETHINKETS 150 LIVES 150

Continued Challenges...



Atlanta 'snowpocalypse' mocked after 2 inches of snow strands thousands

I-85 fire: Section of Atlanta highway collapses



Winter Weather Response Now

Broadcasting our Preparations & Operational Improvements

Georgia DOT prepares for potential winter weather ahead of Super Bowl LIII

01/28/2019 | Sharon Swanepoel | Traffic, Weather | 0



GDOT: Crews ready to fight icy roads, avoid driving if you can

By Eric Mack | Monday, January 28th 2019

Gov. Kemp closes state offices Tuesday due to incoming winter weather

By: Richard Elliot
Updated: Jan 29, 2019 - 10:51 AM

GDOT to continue brining roads Tuesday night



By Alyson Burger | Posted: Mon 11:04 AM, Jan 28, 2019 | Updated: Tue 4:31 PM, Jan 29, 2019

Snow forecast, but Atlanta says it's ready for Super Bowl visitors

Georgia still clinging from humiliating experiences with snow, but



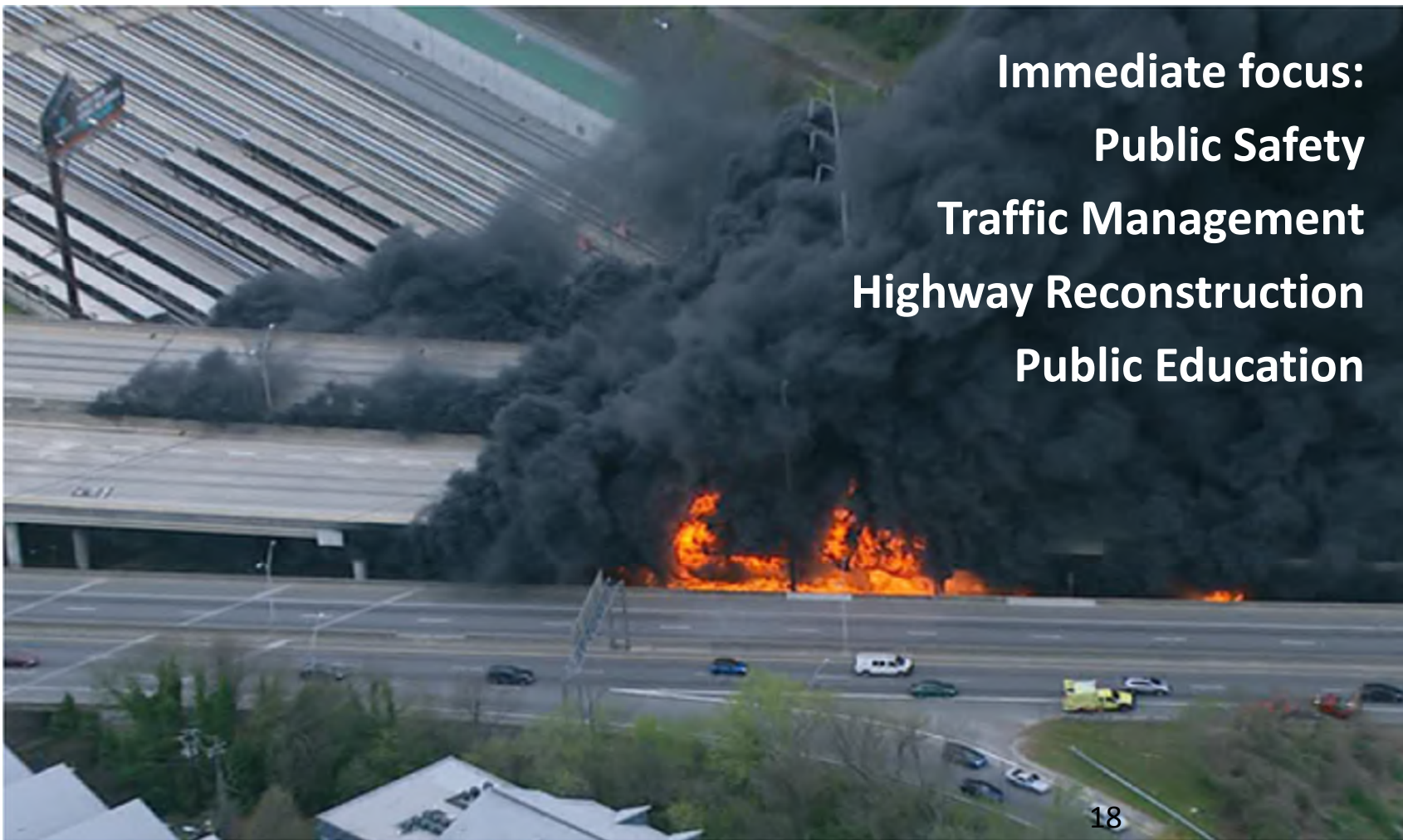
Photo by Steve McWhorter for Atlanta Journal-Constitution, Jan. 28, 2019. 2019/01/28/17

Photo: The Atlanta Journal-Constitution

Advertisement

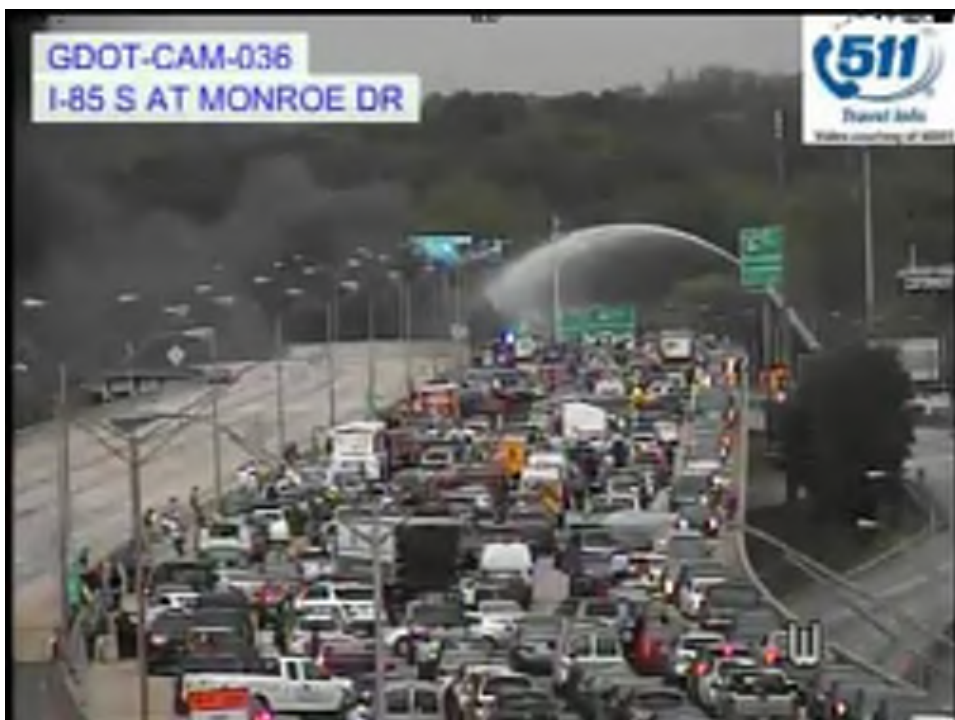






Immediate focus:
Public Safety
Traffic Management
Highway Reconstruction
Public Education

Traffic Management



A major focus for GDOT in the first few hours (and days) of the crisis was rerouting traffic around the closure.



Press Conferences



11:00pm March 30



Noon, March 31



April 4, 2017



Immediate Response



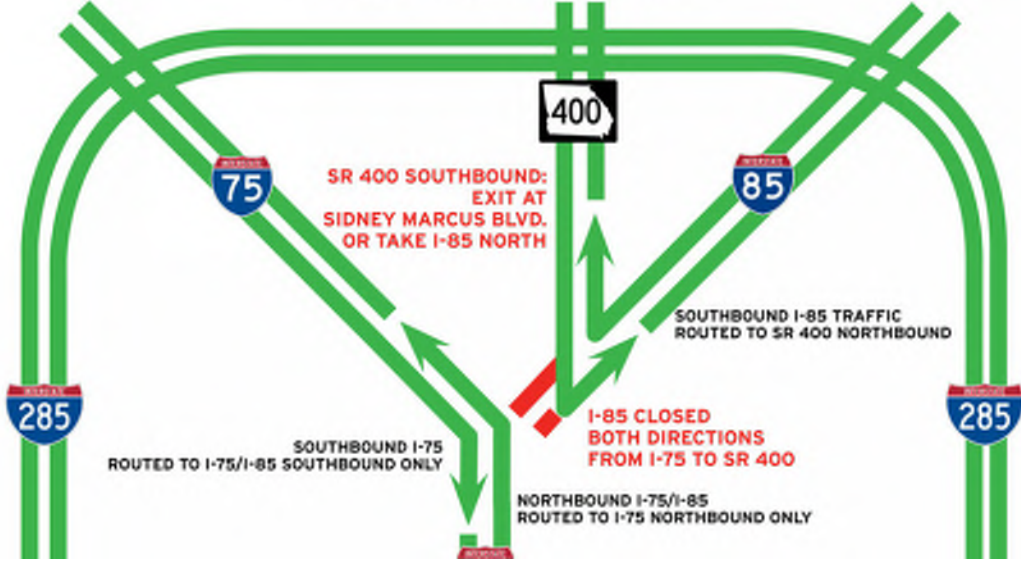
Leveraging Key Partnerships



Serving as a Reliable Resource



I-85 DETOURS



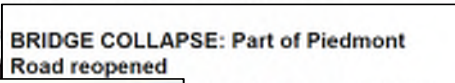
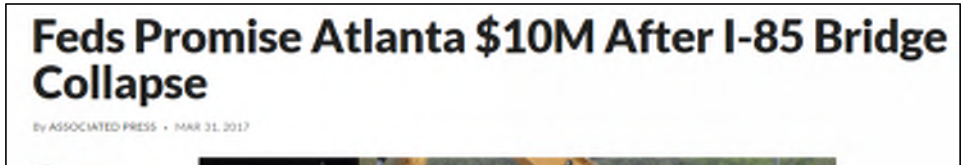
Owning the Story: Regular Media Access



Twice-weekly media briefings and milestone press conferences ensured regular accountability and helped feed the media's and the public's desire for progress reports on the rebuild.



Digital and social media helped ensure open communication with the public at all times.



Video Series



Cadenced Release of Information

I-85 UPDATE: Officials say bridge to reopen before May 26

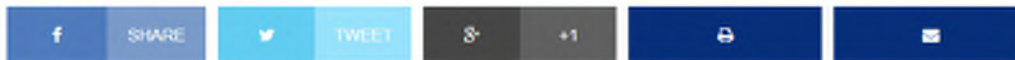


David Wickert - The Atlanta Journal-Constitution
3:15 p.m Monday, May 1, 2017 Filed in AJC Homepage



May 1, 2017 Atlanta: Work continued Monday, May 1, 2017 on the new I-85 bridge in Buckhead. Since a fire led to the collapse of a segment of I-85 in Buckhead March 30, the Georgia Department of Transportation has scrambled to reopen the vital stretch of highway into the heart of Atlanta. Contractor C.W. Matthews is rebuilding 350 feet of northbound and 350 feet of southbound lanes on I-85. JOHN SPINKUSPINK@AJC.COM

I-85 in Atlanta to re-open Monday, nearly five weeks ahead of original schedule



By AccessWDUN Staff



A portion of Interstate 85 in Atlanta, closed after a fire on March 30, is scheduled to re-open Monday, May 15, almost five weeks ahead of the original projected opening.

Gov. Nathan Deal, along with Georgia Department of Transportation (GDOT) Commissioner Russell McMurtry and State Transportation Board Chairman Robert L. Brown Jr., announced the reopening at a Tuesday morning press conference at the State Capitol.

Making Quick Work of Construction



State offers \$3.1 million incentive to finish I-85 bridge early



David Wickert - The Atlanta Journal-Constitution

10:52 a.m. Wednesday, April 12, 2017 Filed in Metro Atlanta / State news

The contractor incentive helped ensure earlier completion, and was also another hook to engage positive media coverage.



Sen. David Perdue (center) and Georgia Department of Transportation Commissioner Russell McMurry toured the site of the I-85 bridge collapse Wednesday. JOHN'S SPINK/AJC

I-85 Reopens in Just Six Weeks



Ribbon-Cutting Celebration



“I always knew Atlanta had a big heart. And on March 30 – and subsequently today – we have seen the heart of Atlanta, and the heart of Georgia.”

- U.S. DOT Secretary Elaine Chao



THANK YOU



Georgia Department of Transportation

@GADeptofTrans